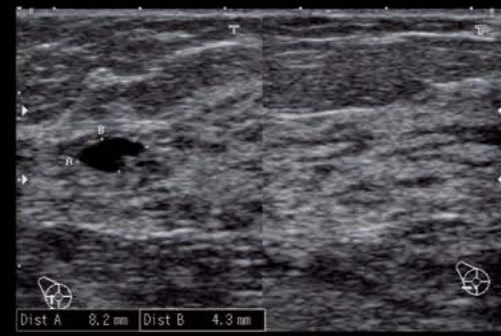
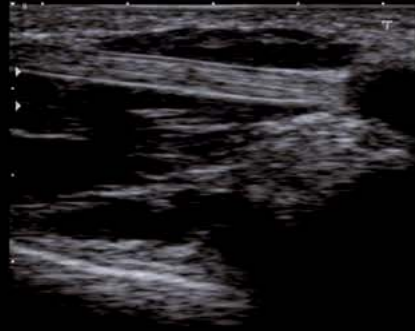


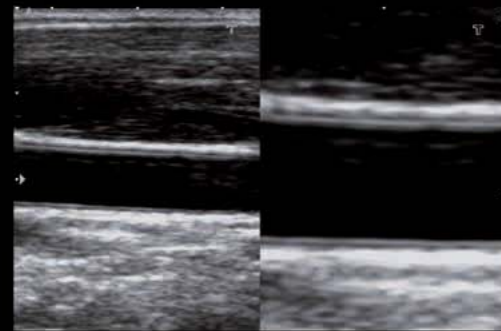
**Right kidney:** Famio 8's dual mode allows you to display two images next to each other for a better overview and easy documentation.



**Mamma cyst:** Tiny objects such as lactiferous ducts or small cysts become clearly visible with Famio 8's unique 14 MHz linear transducer.



**Pollicis tendon:** Famio 8's fully digital imaging engine provides superior spatial and contrast resolution also for demanding clinical applications.



**Carotid artery:** Famio 8's after-freeze zoom offers high resolution images with full detail thanks to the systems raw data architecture.



**Fetal profile:** Outstanding image quality, a full measurement package and an integrated basic reporting function facilitate your fetal examinations.



**10 weeks pregnancy:** The high frequency, wide-view endocavitary transducer permits clear visualization and exact measurements in early pregnancies.

## GLOBAL INNOVATION BY DESIGN

For over 130 years Toshiba's research and development has improved the health and welfare of people around the world.

Today, Toshiba Medical Systems offers a full range of diagnostic imaging products and is a reliable service partner in more than 110 countries.

In accordance with our **Made for Life™** commitment, we will continue to develop innovations that improve patient care and provide lasting quality for a lifetime of value.

## TOSHIBA - A HISTORY OF LEADERSHIP

- 1875** Founding of Toshiba
- 1915** First X-ray tube
- 1966** First diagnostic ultrasound system
- 1973** First real-time echocardiograph
- 1983** First laptop PC
- 1985** First color Doppler system
- 1989** First helical CT scanner
- 1993** First fully digital ultrasound system
- 1997** First open, superconducting magnet
- 2003** First 64-slice CT scanner
- 2004** F&S Technology of the Year award
- 2007** Shipment of the 190,000<sup>th</sup> ultrasound unit
- 2007** World's first Dynamic Volume CT scanner Aquilion ONE™



### TOSHIBA MEDICAL SYSTEMS CORPORATION

<http://www.toshibamedicalsystems.com>

©Toshiba Medical Systems Corporation 2009 all rights reserved.  
Design and specifications subject to change without notice.  
Model number: SSA-530A MCAUS0187EA 2009-7 TME/D/D

Toshiba Medical Systems Corporation meets internationally recognized standards for Quality Management System ISO 9001, ISO 13485.

Toshiba Medical Systems Corporation Nasu Operations meets the Environmental Management System standard, ISO 14001.

Made for Life, Famio, iStyle and Aquilion ONE are trademarks of Toshiba Medical Systems Corporation.

Printed in Japan

# TOSHIBA

Leading Innovation >>>

*famio 8*  
SMART ULTRASOUND

*famio 8*

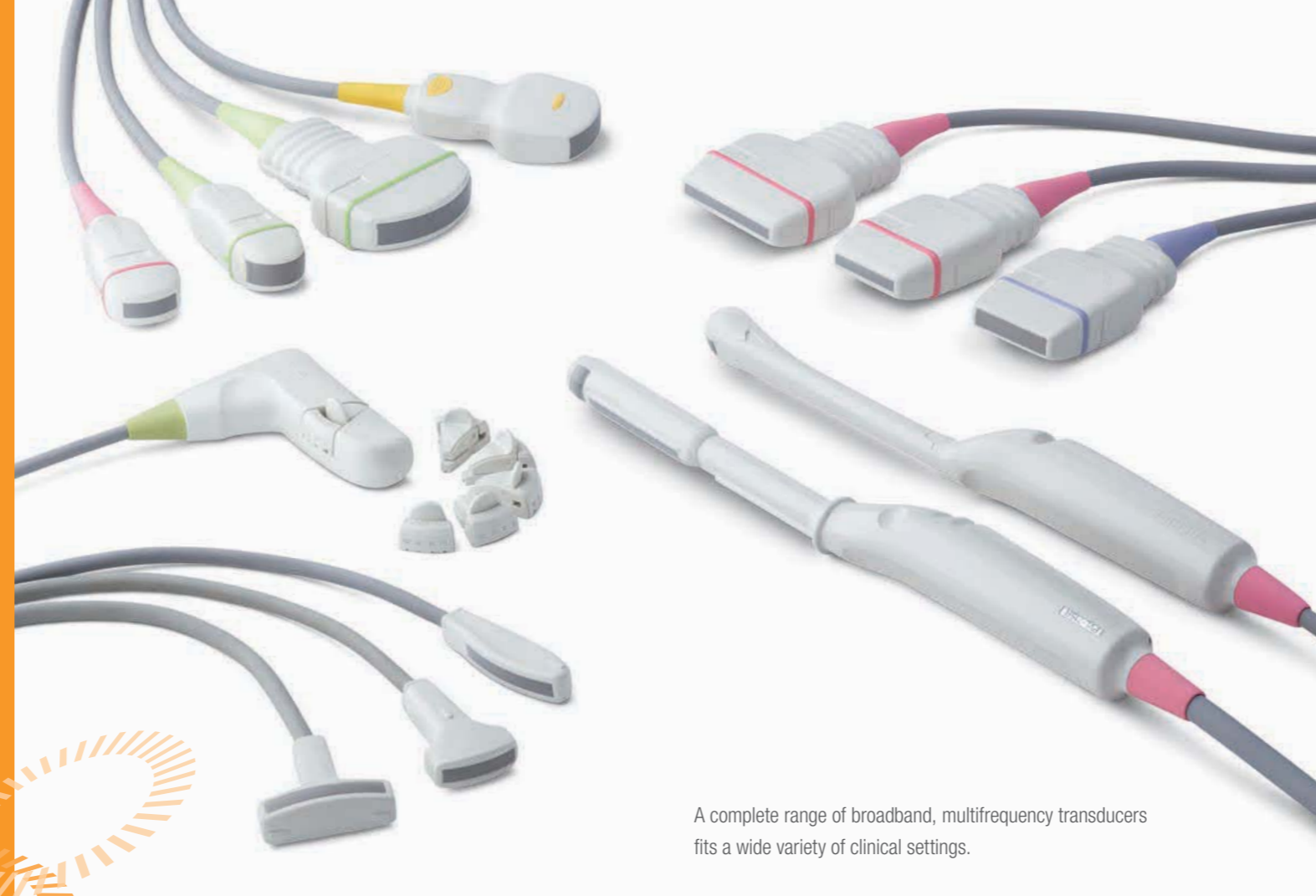
# The latest advances in one compact and mobile system.

Unmatched clinical performance in its class, ultra-portable design, and outstanding ease of use combined with all the reliability you can expect from a Toshiba system – that's the new Famio™ 8.



Famio 8's smart design really boosts clinical performance. Its fully digital system architecture ensures the highest image quality, clinical versatility and flexible workflow. Famio 8's brilliant LCD screen, a full range of wideband transducers up to 14 MHz and standard premium features such as Tissue Harmonic Imaging make it first choice for all your examinations.

Featuring the unique iStyle™ ergonomics and workflow package, Famio 8 brings new levels of efficiency and convenience to your daily clinical practice. Its integrated data management system makes it easy for you to review, archive and share your exams. And with standard DICOM connectivity, Famio 8 integrates seamlessly into virtually any networking environment.

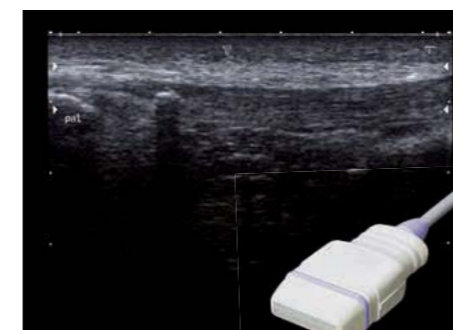


A complete range of broadband, multifrequency transducers fits a wide variety of clinical settings.

Famio 8 offers a full range of broadband transducers to cover the widest range of clinical applications. With up to five selectable frequencies each of the transducers provides optimal sensitivity and resolution from near to far field and in any clinical situation. Ergonomic shapes and extra lightweight, long and flexible cables reduce strain and enhance operator comfort.

Tissue Harmonic Imaging comes as a standard feature with Famio 8. This leading-edge technology provides excellent image resolution and reduces artefacts to a minimum whilst maintaining penetration. Tissue Harmonic Imaging is particularly valuable with obese or otherwise difficult-to-scan patients.

Famio 8's innovative IP switch adjusts all your system settings to any particular scanning condition simply at the touch of a button. This reduces scan time and helps you to improve the quality of your exams.



Tendon with calcification (14.0 MHz, wideview)



Liver hemangioma (6.5 MHz, after-freeze zoom)

## Smart design that really delivers.



Famio 8 combines ultrafast operation with push-button simplicity. It is very compact and boots up quickly, making it the ideal solution for the demanding mobile or small office user. A real mains switch fully disconnects the unit from the power supply when not needed to help you save energy.

The system's brilliant LCD screen with flexible arm and convenient handle provides state of the art display technology combined with outstanding ergonomics.

Important workflow-enhancing features such as a second transducer connector or a full measurement package covering all major clinical applications come standard with the system.

Famio 8's console has two height settings and its illuminated hard keys are fully user-programmable. Hence, individual key functions can be adjusted to suit your personal preferences or specific clinical requirements, helping you to save time and streamline your workflow.

With Famio 8 you can store your image data directly on the integrated hard disk or CD-R. The system's unique raw data architecture does also allow you to store images and clips in raw format without any loss in quality, frame rate or functionality. This DirectCine function allows you to reload actual images or clips back into the cine memory for review, post-measurement and offline zoom.

